

Guru Gobind Singh Educational Society's Technical Campus

(College of Engineering and Management)

Affiliated to Jharkhand University of Technology, Ranchi, Jharkhand

Approved by All India Council of Technical Education (AICTE), Ministry of HRD, Govt. of India, New Delhi

Run by : Guru Gobind Singh Educational Society

(A Non-profit making organization)



COURSES OFFERED

B.Tech in **ME** **CSE** **ECE** **CE** **EEE**

MBA in **HR** **Marketing** **Finance**



CONTACT US: GGSES Technical Campus, Kandra, Chas, Bokaro, (Jharkhand) Pin - 827013,
Phone No: 06542 – 265293, 9905901995, 9905901996, Email ID: info@ggsestc.ac.in, • Website: www.ggsestc.ac.in

About Us

Guru Gobind Singh Educational Society's Technical Campus was established by Guru Gobind Singh Educational Society in 2011 to impart quality Technical and Management education as per global Standards. The campus is situated at Kandra, Chas, Bokaro, a hub of Steel and education.

There are many industries in vicinity of Bokaro which are very much helpful for our students in getting training and developing industry-student interaction. This institute has all the required infrastructure like well-maintained buildings, Laboratories with updated equipments and technology, smart classrooms, separate seminar halls for each course, big size auditorium with seating capacity of about 1000 students, amenities like playgrounds for various games, hostels for boys and girls, staff quarters, a very good canteen, grassy grounds, state of the art gardens, enough circulation areas, well-constructed concrete internal roads etc.

Vision

- To establish one of the best premiere institute in nation/world through providing quality education and research facility in the field of engineering and management education for technocrats and professionals, who are professionally sound, technically competent, ethically cultured, make eco-friendly, scenic campus for the betterment of student and society.

Mission

- To uplift the socially, economically backward students through imparting quality technical and professional education and exposure.
- To develop a world class learning environment for students through quality teaching and research.
- To develop an ecofriendly, scenic and learning oriented ambience in campus where a value based teaching and learning processes are emerging and imparting to students.
- To develop a qualitative, objective based professional and thereby to make GGSESTC a centre of excellence.



**GGSESTC
Bokaro**



Institutional Goal:

- For achieving a benchmark of successful result in each and every segmentation of academic and non academic endeavor with a predetermined, prospective and consistent track record in every year.

Institutional Objectives:

- To become a premiere institute in world with built up a world class infrastructure for imparting quality education and research.
- To create a high class teaching and learning atmosphere not only in minds of young technocrats and professionals but also as practical as emerge.
- To promote, motivate and uplift the weaker section of students who are socially, economically backward and counsel them to drag an opportunity for availing quality education for the betterment of themselves and society.

WEBSITE: www.ggsestc.ac.in

EMAIL: info@ggsestc.ac.in

WHATTSUP/ FACEBOOK / TWITTER/ INSTAGRAM

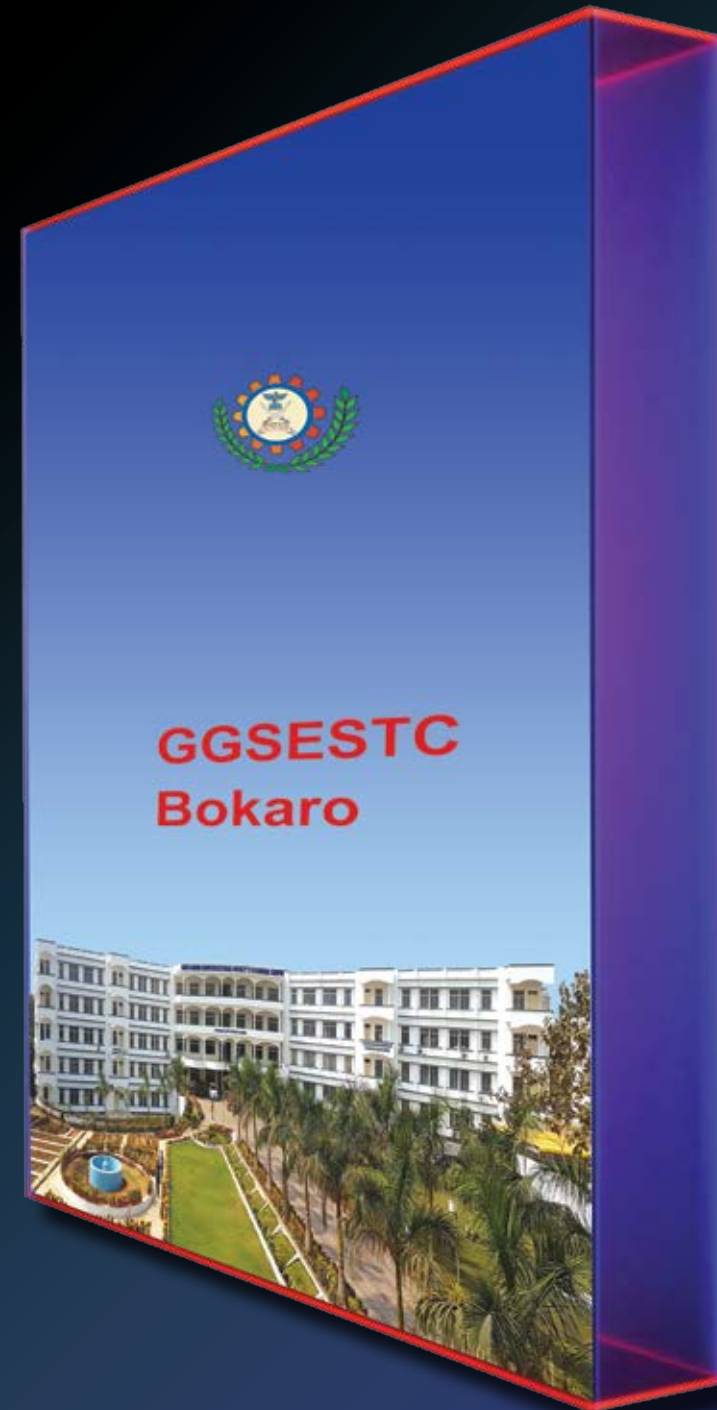
<https://api.whatsapp.com/resolve?deeplink=/%2B917992415822>

<https://www.facebook.com/GGSESTCJHARKHAND/>

<https://twitter.com/ggsestcB>

<https://www.instagram.com/ggsestc.bokaro/>

ALSO VISIT US ON:



Messages

From President's Desk



SHRI TARSEM SINGH
President, GGES

Guru Gobind Singh Educational Society's Technical Campus was established to provide professional education for the student of Jharkhand & nearby states. On behalf of GGSES Technical Campus family, it is my pleasure to introduce GGSESTC to offer my vision for 21st Century.

This college was established to fulfill society's needs. GGSESTC is situated in Bokaro, part of Jharkhand state and known for steel production. Students of Bokaro used to go outside as there was no any college here to provide technical and management education. Our society thought about that and established this college to educate new generation. Today's world has developed new technologies that link countries, but many human beings are deprived of this facilities especially the local residents of Bokaro and nearby areas. GGSESTC is answerable to calls of speaking to world. I invite you to join us as student, guardian and stake holders.

From Secretary's Desk



SHRI S. P. SINGH
Secretary, GGES

Iwelcome you all on behalf of Guru Gobind Singh Educational Society's Technical Campus (GGSESTC). Our campus is regularly sanitized and thoroughly cleaned in view of COVID 19. I invite all guardians of Jharkhand and Bihar state to visit our neat and clean COVID free campus. GGSESTC is imparting education in Engineering and Management program to produce competent professionals of concerned field. GGSESTC have a wide range of workshops and laboratories supplemented by state of the art library with the reprographic facility. Institute's infrastructure is tuned with the academic delivery system. Our faculty members are well qualified and they regularly organize seminars, workshops and conference in several fields of Technology, Management, Humanities and Science. Our faculty members are sincere and dedicated to the development of the students' skill and knowledge to make them globally competent.



DR. C. D. SINGH
Technical Advisor, GGSESTC

FROM TECHNICAL ADVISOR'S DESK

Our College (Guru Gobind Singh Educational Society's Technical Campus), established in 2011, has now entered into 10th year of its existence and that too with aplomb. In the year 2011, GGSESTC was first of its kind among the institutions in Jharkhand, To start a technical campus with different school of education such as school of Engineering (B.Tech) and school of Business Administration (MBA) and

joined the leaders in imparting quality education within a decade.

In 2020, the technical campus has reached its academic excellence at par with or even better than all other technical and business colleges of the state, based on the performance of the students in academic and professional fields. This is only possible due to the dedicated efforts, put forward by the well qualified and experienced teachers, having great sacrifice, love, affection and professional excellence. Its infrastructure, various laboratories, library, workshops. Hostels etc. are second to none.

The vision of the college is to turn our students and scholars, into global players in the area of technical, social, professional and business practices by equipping them with the skills and operate in a complex business environment and also by helping them in personal and professional development. To that effect, this technical campus is retrieving to provide dynamic environments to the students. I complement the parents and students who have opted to join this technical campus, for their wise and judicious choice and stand them my hearty welcome for spending their Formative years fruitfully. Through this prospectus, the Students will get a glimpse of the information about the academic programs, infrastructure and campus activities.

I also assure you that you will have most memorable and fruitful experience by joining this institute in your desire discipline.

I extend my best wishes to the incoming students.



DR. BIKASH GHOSHAL
Director, GGSESTC

FROM DIRECTOR'S DESK

India is a country of 1.2 billion people. Hi Tech is not a luxury but a necessity for the people of our country in order to manage and control different aspects in every walk of life for the rich as well as the poor. India needs massive technical manpower. Therefore, there is dire need to change the overall culture of technical education in India.

The above theme was a dream cherished by Guru Gobind Singh Educational Society and established a technical institute in 2011 with the mission of achieving excellence in the field of Engineering & Management in the name of Guru Gobind Singh Educational Society's Technical Campus at Chas, Bokaro. The institute is equipped with highly qualified and experienced faculties having M.Tech, MBA and PhD. including, state of the art laboratories and modern workshop facilities to develop the necessary skills in competitive technical intelligence, communication, critical thinking abilities, corporate welfare and soft skills. The institute provides full support to improve their moral values and sense of responsibility. All efforts are made to improve the creativity and problem solving abilities of the students so that they can contribute their best to the society and the country. The members of society believe that education has incredible powers to bring about change in the standard of living of individual by providing knowledge and training that will improve their employability leading to the development of the society as a whole.

While we feel proud of ourselves for our performance towards obtaining marked achievements, we are not contented. Our vision is to emerge as a top ranking engineering college in the eastern region of our country. Our aim is to achieve global recognition as a leading player in the field of technical education. We the stake holders, students, faculty, staff and management of Guru Gobind Singh Educational Society's Technical Campus believe that it is just beginning but there is a long way to go but I am sure, with the active cooperation of all, we will be able to fulfill the motto of GGSESTC. It is with this belief we are continuously engaged over the years in a relentless endeavor to improve upon the past performance and enhance the position of the institute in the league of the best technological institutions in the country to provide undergraduate/post graduate education in the field of Mechanical, Civil, Electronics, Computer Science, Electrical and Electronics Engineering & Management

COURSES OFFERED

B.Tech

COMPUTER SCIENCE AND ENGINEERING

CIVIL ENGINEERING

MECHANICAL ENGINEERING

ELECTRICAL AND ELECTRONICS ENGINEERING

ELECTRONICS AND COMMUNICATION ENGINEERING

M.B.A

HR

FINANCE

MARKETING

* Faculties are as per AICTE & University norms

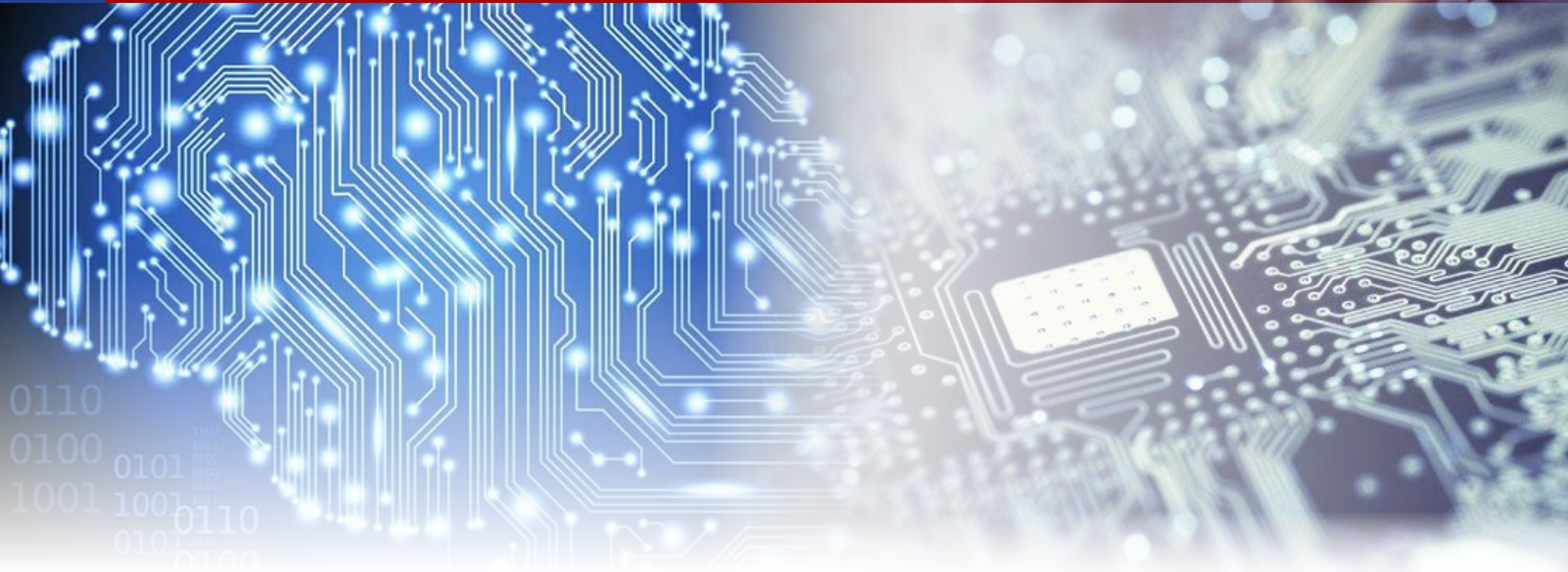
PROGRAMME	DURATION	ELIGIBILITY
B.Tech.	4 years	Passed 10+2 examination with Physics and Mathematics as compulsory subjects along with one of the Chemistry/ Bio-Technology/ Biology/ Technical Vocational subject. Obtained at least 45% marks (40% in case of candidate belonging to reserved category) in the above subjects taken together.
B.Tech (Lateral entry)	3 years	a. Passed Diploma examination from an AICTE approved Institution; with at least 45% marks (40% in case of candidates belonging to reserved category) in appropriate branch of Engineering/ Technology. b. Passed B.Sc. Degree from a recognized University as defined by UGC, with at least 45% marks (40% in case of candidates belonging to reserved category) and passed XII standard with mathematics as a subject.
MBA	2 years	Recognized Bachelor's Degree of minimum 3 years duration. Obtained at least 50% marks (45% in case of candidate belonging to reserved category) at the qualifying Examination.

COURSE STRUCTURE:

As per the directives of Jharkhand University of Technology (JUT) Ranchi, Jharkhand

S. No	Category	Course Code	Course Title	Hours Per Week			Credit	Marks		
				L	T	P		IA	ESE	Total
THEORY										
1	Basic Science Course	BSC101	Physics I	3	1	0	4	30	70	100
2	Basic Science Course	BSC103	Mathematics – I	3	1	0	4	30	70	100
3	Engineering Science Courses/ Basic Science Course	ESC101/ BSC102	Basic Electrical Engineering/ Chemistry I	3	1	0	4	30	70	100
Total (A)							12	90	210	300
PRACTICAL/DRAWING/DESIGN										
4	Engineering Science Courses	ESC102	Engineering Graphics & Design	1	0	4	3	25	25	50
5	Basic Science Course	BSC101P	Physics Lab	0	0	3	1.5	25	25	50
6	Engineering Science Courses/ Basic Science Course	ESC101P/ BSC102P	Basic Electrical Engineering Lab / Chemistry Lab	0	0	2	1	25	25	50
Total (B)							5.5	75	75	150
Grand Total (A+B)							17.5	165	285	450

S. No	Category	Course Code	Course Title	Hours Per Week			Credit	Marks		
				L	T	P		IA	ESE	Total
THEORY										
1	Basic Science Course	BSC105	Physics II	3	1	0	4	30	70	100
2	Engineering Science Courses / Basic Science Course	ESC101/ BSC102	Basic Electrical Engineering/ Chemistry I	3	1	0	4	30	70	100
3	Basic Science Course	BSC104	Mathematics – II	3	1	0	4	30	70	100
4	Engineering Science Courses	ESC103	Programming For Problem Solving	3	1	0	4	30	70	100
5	Humanities And Social Sciences Including Management Courses	HSMC101	English	2	0	2	3	30	70	100
Total (A)							19	150	350	500
PRACTICAL/DRAWING/DESIGN										
6	Engineering Science Courses	ESC104	Workshop/ Manufacturing Practices	1	0	4	3	25	25	50
7	Engineering Science Courses/ Basic Science Course	ESC101P/ BSC102P	Basic Electrical Engg. Lab / Chemistry Lab	0	0	2	1	25	25	50
8	Engineering Science Courses	ESC103P	Programming For Problem Solving	0	0	2	1	25	25	50
Total (B)							5	75	75	150
Grand Total (A+B)							24	225	425	650



The Department of Electronics & Communication Engineering is a rapidly progressing field with technology enveloping our everyday life . Opportunities for Electronics Engineers are endless.

The Department of ECE, GGSESTC strives to equip students with necessary core competency to attain success in Engineering areas after completion of the course. Electronics and Communication Engineers engage in Research, Design, Development and Testing of electronics equipments used in various systems.

The Department offers B.Tech in ECE with full and flexible undergraduate curriculum, equipped with state-of-the-art laboratories and has proficient and skilled faculties to impart world class technological solutions to the students.

Potential Career Opportunities in Power Industries, Robotics, Process Industry, Bioengineering apart from Telecommunications, Transport, Computer Technology, Transmission Industries and innovative private specialists and communication services.



S.N	LABORATORIES	S.N	LABORATORIES
1	Analog Electronics Lab	7	Electronics And Instrumentation Lab
2	Analog Communication Lab	8	Microprocessor Lab
3	Basic Electronics Lab	9	Microwave Engineering Lab
4	Digital Electronics Lab	10	Semiconductor Devices (Or-Cad Lab)
5	Digital Communication Lab	11	Telecommunication & Switching Lab
6	Digital Signal Processing Lab		





The Department of Civil Engineering deals with the Construction, Soil Mechanics, Transportation, Municipal Sanitary, Surveying, Mapping and Hydraulics. A Civil Engineer deals with the design and supervision of construction of bridges, buildings, Tunnels, Water Reservoirs and Dams etc.

Engineers specialized in soil mechanics are vital and relevant for conquest of areas ranging from Antarctica to the Moon.

Transportation Engineering deals with the Planning, Research, Design and Construction of roads, streets and thoroughfares etc.

A Civil Engineer is expected to do Planning, Research, Design and Construction of buildings and roads, traffic and transportation, irrigation and power, water supply and sewage disposal, dams and reservoirs, ports and harbors, airways and navigation, treatment of Industrial Wastes and abatement of air pollution and disaster mitigation.



S.N	LABORATORIES	S.N	LABORATORIES
1	BUILDING MATERIALS & CONSTRUCTION LAB.	6	ENVIRONMENT ENGINEERING LAB
2	FIELD SURVEYING LAB	7	WATER RESOURCE ENGINEERING LAB
3	GEOLOGY LAB	8	STRUCTURAL ANALYSIS LAB
4	CAD LAB	9	FOUNDATION ENGINEERING LAB
5	GEOTECHNICAL ENGINEERING LAB	10	TRANSPORTATION ENGINEERING LAB





The Department of Mechanical Engineering, Guru Gobind Singh Educational Society's Technical Campus, Chas, Bokaro strives to be globally recognised for imparting a quality engineering education so as to make students competent and well-versed in disciplinary depth and breadth together with a zeal to tackle every technical as well as professional obstacles effectively and inculcating the characteristics of entrepreneurship and Confidence within them..

The Department of Mechanical Engineering, one of the six founding departments of Guru Gobind Singh Educational Society's Technical Campus, since its inception in 2011 has played a leading role in providing a modular and structured "Engineering Science"- based curriculum to students by imparting quality technical education through its Innovative teaching methods, experienced and well-qualified faculty members and state-of-the art infrastructural facilities.

The current streams of study in the department includes Solid Mechanics & Design, Fluid Mechanics & Thermal Sciences, Material Science & Manufacturing Technology, Automation & Robotics, Mechanical Measurements & Control and Industrial Management.

Each year, special training on computer-based design software like ANSYS and Solid Modeling are organized within the department. Moreover, industrial visit to reputed industries like SAIL, Bokaro, TPSDI, Maithan, CTPC, Jamshedpur, CTPC, Ranchi, are also organized for all students of mechanical engineering. Our Students and faculty members are involved in projects that aims to provide engineering solutions to everyday global challenges. Our research-active faculty members take a real interest in providing the best and up-to-date technical education possible. This is reflected in the increasing number of Mechanical Graduates qualifying for GATE, PSUs etc as well as taking the opportunity of Campus Placements.



S.N	LABORATORIES
1	BASIC ELECTRICAL & MECHANICAL WORKSHOP
2	FLUID MECHANICS LABORATORY
3	HYDRAULIC MACHINERY LABORATORY
4	MACHINE SHOP
5	HEAT & MASS TRANSFER LAB
6	THERMAL ENGINEERING LAB
7	METROLOGY & MEASUREMENTS LAB
8	CAD/CAM LAB
9	SOLAR ENERGY LABORATORY
10	ENGINEERING DRAWING



The Department of Electrical and Electronics Engineering in GGSESTC provides students about engineering skills and technological knowledge needed to design, assess and improve electrical system to strengthen modern economic and contribute in improving the quality of life. The department with its strong pool of qualified faculties and upgraded laboratories contribute in developing lifelong learning skills to its B.Tech students. Electrical engineers will transform the 21st century with new technologies such as Electric Vehicle, Smart Grid, Green Energy Electrical Power converter, Artificial Intelligence and so on.

Electrical engineering students lead to a potential career in the Power sector, Transmission industries, Robotics, Process industry, Bioengineering, Tele-Communication industry, Mining, Transport sector, Computer industry and small innovative private entrepreneurship etc.



S.N	LABORATORIES
1	BASIC ELECTRICAL ENGINEERING LAB
2	NETWORK THEORY LAB
3	ELECTRICAL MACHINES I & II LAB
4	MICROPROCESSOR & MICROCONTROLLER LAB
5	POWER ELECTRONICS LAB
6	MATLAB LAB
7	MEASUREMENT & INSTRUMENTATION LAB
8	ELECTRICAL WORKSHOP LAB
9	POWER SYSTEM I & II LAB
10	CONTROL SYSTEM LAB
11	ELCTRICAL SIMULATION LAB



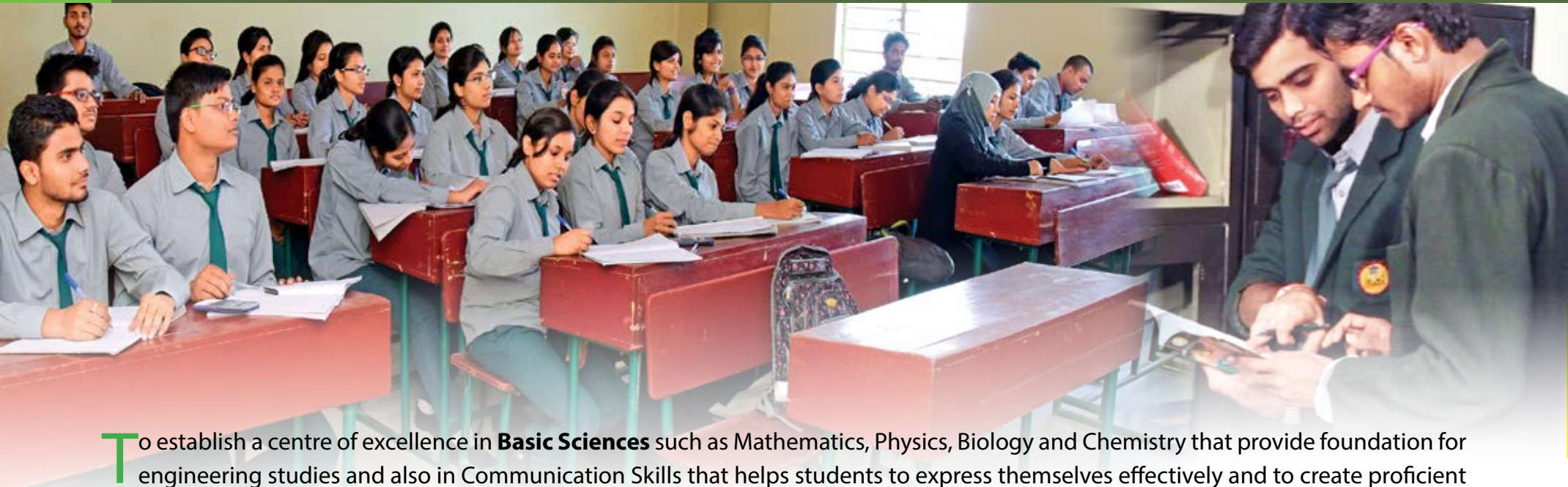
The department of Computer Science and Engineering has state-of-the-art infrastructure and computing equipment with latest configurations, supported by high speed Ethernet and wireless Network. The department offers an up to date and comprehensive curriculum with an Emphasis on practical learning through its well-equipped labs such as Programming Lab, Computer Network Lab, DBMS Lab, MATLAB etc.

The Department has highly qualified faculties, actively involved in nurturing the students with capability to demonstrate their technical skills. Summer training, project related work are carefully planned for the students to remain updated with the recent technology.

This broadness of the Computer science and Engineering degree offers a wide array of career opportunities – which not only include the Software field, Artificial Intelligence and Database Management System but also in the emerging areas of Robotics, Soft Computing, Cloud Computing, Biomedical Engineering etc.



S.N	LABORATORIES
1	PPS LAB
2	DATA STRUCTURES AND ALGORITHMS LAB
3	DESIGN AND ANALYSIS OF ALGORITHMS LAB
4	OBJECT ORIENTED PROGRAMMING LAB
5	OPERATING SYSTEMS LAB
6	SOFTWARE ENGINEERING LAB
7	COMPUTER ORGANIZATION AND ARCHITECTURE LAB
8	COMPUTER NETWORK LAB
9	COMPILER DESIGN LAB
10	SOFT COMPUTING LAB
11	COMPUTER GRAPHICS LAB
12	LINUX PROGRAMMING & SYSTEM ADMINISTRATION LAB
13	ARTIFICIAL INTELLIGENCE & EXPERT SYSTEM LAB



To establish a centre of excellence in **Basic Sciences** such as Mathematics, Physics, Biology and Chemistry that provide foundation for engineering studies and also in Communication Skills that helps students to express themselves effectively and to create proficient engineers who can be globally challenged in engineering fundamentals- experimental, analytical and computational abilities. To cater our students to pursue both intellectual growth and professional development, balance both depth and breadth in learning experience, practice both thoughtful reflection and active application.

The department is committed to mould the students into responsible individuals, having depth knowledge of subjects, discipline and human values, thereby contributing to the overall growth of the country. Our vision is to offer the best for the society by imparting high quality education to stimulate in the students a spirit of enquiry and desire to gain knowledge and skills that can enrich their lives in future.

Committed to towards teaching we induce in our students critical thinking and logical reasoning or problem solving communicate effectively and understand ethically. These skills serve as the foundation for living the examined life and succeeding in an increasingly global ever changing workplace and to strive hard to overcome the hindering forces in the minds of young technocrats and to catalyze technical activity, thereby directing a light beam for better making of country. To provide value based education and mould the character of younger generation through Science to include discipline and perseverance in students through methodological teaching with the aim of making best citizen. Keeping the core objectives to create academic excellence in fundamental Science, the department of Science and Humanities aims to encourage advanced teaching learning process and quality research at individual department and institutional level. It also endeavours to build quality based knowledge and human resource capacity.



S.N.	LABORATORIES
1	PHYSICS LAB
2	CHEMISTRY LAB
3	ENGINEERING GRAPHICS AND DESIGN
4	BASIC ELECTRICAL ENGINEERING LAB
5	WORKSHOP
6	MANUFACTURING PRACTICES
7	PROGRAMMING FOR PROBLEM SOLVING
8	LANGUAGE LAB





Master of Business Administration (MBA) program provides a better platform to the students with a Professional and flexible degree which can help students for gaining Professional / business knowledge and for enhancing their understanding in any particular Professional /business domain like specialization of Finance/HR/Marketing etc. Basically it helps students for self-sustaining with entrepreneurial knowledge of employability and becomes more marketable across a wider range of work-profiles and across countries, move upwards in a company into managerial cadre, develop an extensive professional network or even set up one's own business.

GGSESTC, kandra, Chas, Bokaro providing the Professional degree Master of Business Administration (MBA) program affiliated to Jharkhand University of Technology (JUT), Ranchi. For details regarding the program content, duration, curriculum, examinations and evaluations please visit the GGSESTC MBA page from our website.



INFRASTRUCTURE



GIRLS HOSTEL



BOYS HOSTEL

STATE-OF-ART INFRASTRUCTURE

FULLY WI-FI ENABLED PREMISES

COMMON FACILITY OF TV & NEWSPAPERS

COLD AND HOT WATER SUPPLY

SEPERATE MESS FACILITY (BOTH VEG AND NON-VEG CUISINES AVAILABLE)



GGSESTC BASKET-BALL COURT

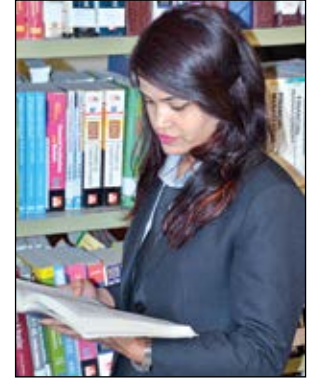


GURU TEGH BAHADUR AUDITORIUM



GGSESTC STAFF QUARTERS (R)

CENTRAL LIBRARY - GGSESTC



IN-CAMPUS HEALTHCARE FACILITY



IN-CAMPUS BANK & ATM FACILITY



TRANSPORTATION (BUS) FACILITY

SPORTING FACILITIES



ANNUAL SPORTS MEET

An annual sports meet is held every year in which students of both B.Tech and MBA participate in inter-departmental sports competitions which includes sports like Athletics, Shot-Put & Discuss Throw, Javelin Throw, Cricket, Badminton, Volleyball, Basketball-Ball, Chess & Carrom etc.

CULTURAL FEST



IN-CAMPUS ACTIVITY



FEE STRUCTURE

B.TECH

Fee Head	1 st SEM	2 nd SEM	3 rd SEM	4 th SEM	5 th SEM	6 th SEM	7 th SEM	8 th SEM
Tuition Fee	29,250	29,500	29,250	29,500	29,250	29,500	29,250	29,500
Admission Fee/Registration Fee	2,000							
Development Fee	2,000	2,000	2,000	2,000	2,000	2,000	2,000	2,000
Utility Charges(Electricity, Water Supply & Generator)	1,500	1,500	1,500	1,500	1,500	1,500	1,500	1,500
Identity Card	100							
Sports Fee	750	750	750	750	750	750	750	750
Annual Function/ Cultural Fee	750	750	750	750	750	750	750	750
Technical , Communication, Training & Placement Fee for 4 th year			1,000		2,500		5,000	
Internet Facility Fee	500	500	500	500	500	500	500	500
Internal Examination	1,000	1,000	1,000	1,000	1,000	1,000	1,000	1,000
Caution Money (Refundable)	5,000							
Student Insurance Fee	500							
Total:	43,350	36,000	36,750	36,000	38,250	36,000	40,750	36,000
GRAND TOTAL:	3,03,100	Three Lakh Three Thousand One Hundred Only						

B.TECH (Lateral Entry)

Fee Head	3 rd SEM	4 th SEM	5 th SEM	6 th SEM	7 th SEM	8 th SEM
Tuition Fee	29,250	29,500	29,250	29,500	29,250	29,500
Admission Fee/Registration Fee	2,000					
Development Fee	2,000	2,000	2,000	2,000	2,000	2,000
Utility Charges(Electricity, Water Supply & Generator)	1,500	1,500	1,500	1,500	1,500	1,500
Identity Card	100					
Sports Fee	750	750	750	750	750	750
Annual Function/ Cultural Fee	750	750	750	750	750	750
Technical , Communication, Training & Placement Fee for 4 th year			2,500		5,000	
Internet Facility Fee	500	500	500	500	500	500
Internal Examination	1,000	1,000	1,000	1,000	1,000	1,000
Caution Money (Refundable)	5,000					
Student Insurance Fee	500					
Total:	43,350	36,000	38,250	36,000	40,750	36,000
GRAND TOTAL:	2,30,350	Two Lakh Thirty Thousand Three Hundred Fifty Only				

M.B.A.

Fee Head	1 st SEM	2 nd SEM	3 rd SEM	4 th SEM
Tuition Fee	27,850	27,950	27,850	27,950
Admission Fee/Registration Fee	2,000			
Development Fee	1,850	1,850	1,850	1,850
Utility Charges(Electricity, Water Supply & Generator)	1,500	1,500	1,500	1,500
Identity Card	100			
Sports Fee	750	750	750	750
Annual Function/Cultural Fee	750	750	750	750
Internal Examination	1,000	1,000	1,000	1,000
Technical & Communication Training & Placement Fee for 2 nd year	1,500		4,000	
Internet Fee	500	500	500	500
Caution Money (Refundable)	5,000			
Student Insurance fee	500			
Total:	43,500	34,300	38,400	34,300
Grand Total:	1,50,500	One Lakh Fifty Thousand Five Hundred Only		

GGSESTC DISCIPLINE, FINE AND CODE OF CONDUCT RULES FOR STUDENTS

LEVEL-1

1. All acts of violence and all forms of mob activities such as gheraos, sit-ins or any variation of the same which disrupt the normal academic and administrative functioning of the Institute and/or any act which incites or leads to violence.
2. Gheraos, laying siege or staging demonstrations around the residence of any member of the GGSESTC community or any other form of coercion, intimidation or disturbance of right to privacy of the residents of the campus.
3. Sexual harassment of any kind which shall also include:
 - Sexual proposition/advancements, sexually graphic comments of a body, unwelcome touching, patting, pinching or leering or persistent offensive or sexual jokes and/or vulgar comments.
 - Eve-teasing or disrespectful behavior or any misbehavior with a girl student, woman staff member/visitor. Ragging in any form.
4. If any student withdraw from the Institute, he or she has pay tuition fees of current year before leaving.
 - Fine of Rs. 5000/- per 10,000 dues of tuition fees per month will be impose for late submission of fees.

LEVEL-2

- I. Committing forgery, tempering with the Identity Card or Institute records, impersonation, misusing Institute property (movable or immovable), documents and records, tearing of pages, defacing, burning or in any way destroying the books, journals, magazines and any material of the library or unauthorized photocopying or possession of library books, journals, magazines or any other material.
- II. Furnishing false certificates or false information in any manner to the Institute.
- III. Arousing communal, caste or regional feeling or creating disharmony among students.
- IV. Use of abusive, defamatory or derogatory language against any member of the Institute Community.
- V. Causing or colluding in the unauthorized entry of any person into the Campus or in the hostel. Accommodating unauthorized guests or other persons in hostels.
- VI. Indulging in acts of gambling, possessing or consuming or distributing alcohol, harmful drugs, illegal narcotics, ghutkas and smoking cigarettes in the Institute premises.
- VII. Damaging or defacing any property of the Institute.
- VIII. Misusing institute resources and facilities such as library, software, computers and internet or causing any type of damage to intranet and computer security system of the institute.

GGSESTC DISCIPLINE, FINE AND CODE OF CONDUCT RULES FOR STUDENTS

LEVEL-2

- IX. Harming reputation of the institute or individual (fellow students and institute staff) through social and electronic media.
- X. Improper behavior while on tour or excursion.
- XI. Violation of security and safety rules notified by the Institute.
- XII. Any intimidation or insulting behavior towards a student, staff or faculty or any other person.
- XIII. Any other act which may be considered by the Chairman/Director General/Director or any other competent authority to be an act of violation of discipline and conduct.

PUNISHMENT FOR VIOLATION OF RULES AND REGULATIONS

The competent authority may impose any of the following punishments on any student found guilty of any of the acts of indiscipline or misconduct and violation of General and Academic Rules and Regulation of the institute.

FOR LEVEL 1 OF MISCONDUCT AND INDISCIPLINE

- Expulsion from the institute and/ or hostel.
- Fine up to Rs. 50,000/- (Fifty thousand only) (In case of Ragging as per Supreme Court ruling)
- Logging of FIR with the Police.

FOR LEVEL 2 OF MISCONDUCT AND INDISCIPLINE AND VIOLATION OF GENERAL AND ACADEMIC RULES AND REGULATIONS

- Fine up to Rs. 20,000/- (Twenty thousand only).
- Recovery of any kind, such as scholarship / fellowship, any dues, cost of damages etc.
- Withdrawal of any or all facilities available to a student as per, GGSESTC Rules (such as Scholarship, hostel etc.)
- Suspension from the institute for a specific period.

CORPORATE RESOURCE CENTRE (CRC)

Training & Placement Centre

The CRC consists of both Training Cell and Placements Cell. In persuasion of excellence and growth the institute has recently constituted Corporate Resource Centre (CRC) to improve the interface between institute and industry representatives. The CRC creates a platform where the institute gets maximum exposure from the industry. The pursuit of excellence requires a transparent and honest approach. The CRC is open to new ideas and continuously adopting new learning methods and technologies to improve the life of students. In nutshell, the CRC is not leaving any stone unturned in preparing students for the next orbit.

The CRC is managed by the group of people who rich experience in handling Training as well as placements of students and good amount of coverage of industry.

Objective of CRC

- To facilitate the institute in signing the Memorandum of Understanding (MOU) with industry
- To act as a seamless spillway between industry and the institute
- To understand the needs of the students and develop the customized training program to improve the employability skills among students and make them ready to face the industry challenges ahead
- To act as a single window nodal point for career counseling and higher learning
- To make systems / procedures for functioning of smooth activities like Final Placements, Summer Placements and live projects (if any)



TRAINING & PLACEMENTS

Technological training to compete with new technologies .

The main objective is to provide an over all personality development using the following aids

- ▶▶ Mock tests
- ▶▶ Group discussions and PI
- ▶▶ Group tasks
- ▶▶ Enhancement of Communication skills
- ▶▶ Sound knowledge in JAVA, DOTNET, PLC, SCADA, AUTOCAD, RENIT CAD

OUR TRAINING PARTNERS



OUR TOP RECRUITERS



OUR INDUSTRY ASSOCIATES

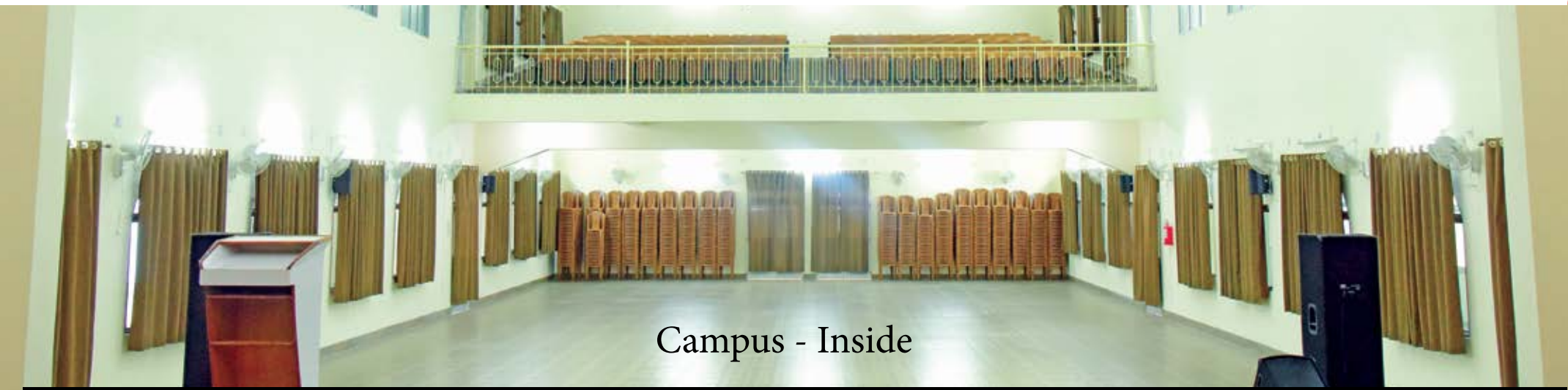
Given below is the list of companies, who are our industry associates:

Aayat Softech Pvt. Ltd.
ARN Teleservices
Brainsoft Software
Bureau Veriatas India
Cadera Infotech Pvt. Ltd.
Decathlon Sports India
DEE Power Corporation
DR. Wiesner Test & Automation
DT Global Marketing Services Pvt. Ltd.
E Coronet Engineers Pvt. Ltd.
ERA Construction Ltd.
Genpact India

iB Arts Pvt. Ltd.
ICICI Bank
Infinity World for E Solutions
Insolergy Technologies
Intelenet Global Services
Just Dial
Karvy Stock Broking Limited
Nath Corp Pvt. Ltd.
Narnolia Financial Advisors Ltd
NVS Pvt. Ltd.
Orchesys IT Systems Pvt. Ltd.
PNB Metlife

Pulse Solutions
R1RCM Global Pvt. Ltd.
RIJ Engg. (P) Ltd.
Rotodyne Engg. Services (P) Ltd.
S.R. Enterprises (NX Steel)
SGM Technologies
Sparrow Softech Pvt. Ltd.
Suncore Microsystems
Synapse India
Tech Mahindra
Techno Culture Building Centre
The Lobicons
TNS India





Location Map for GGSESTC

